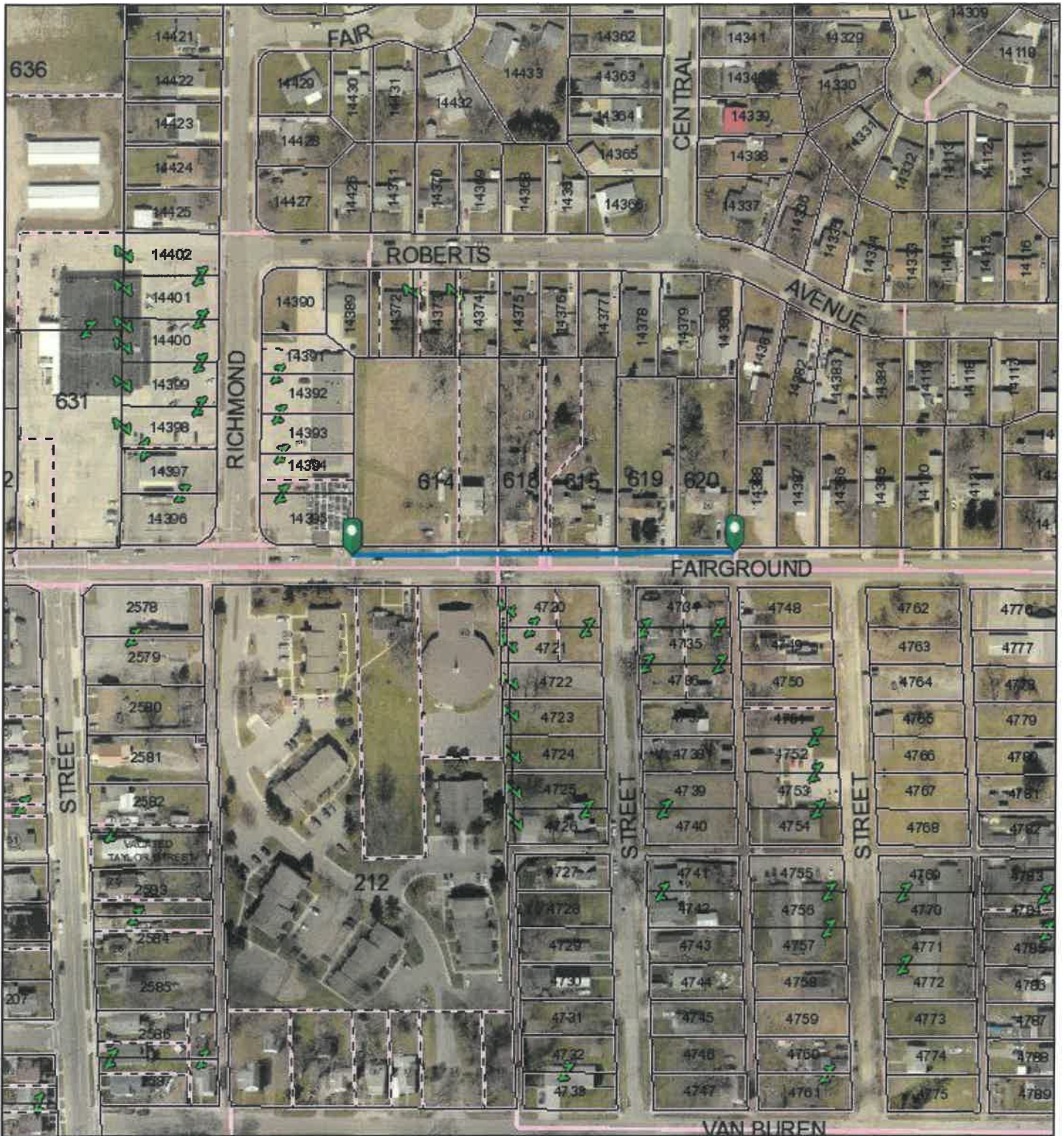


536 E. Fair ground to Richmond



4/15/2021, 12:43:59 PM

1:2,340

- Annotation Arrows
 - Full Line
 - - Dashed
 - Boundaries
 - City & Villages
 - ⋈ Tie Marks
 - ⋈ Full Tie
 - ⋈ Half Tie
- 2018_3inch**
2018_9Inch_Aerials

